



Virtual Public Hearing Pre-Recorded Presentation

I-35 Capital Express South Project

From: SH 71/Ben White Blvd. to SH 45SE

Tuesday, April 27, through Wednesday, May 26, 2021

CSJs: 0015-13-007 & 0016-01-113



April 27, 2021



TxDOT is conducting this virtual public hearing to minimize in-person contact.

This virtual public hearing and the Capital Express South project website provide the same information as a live hearing:

- Project information
- Estimated timeline
- Process for submitting comments
- Key contacts

Share Facts About COVID-19

Know the facts about coronavirus disease 2019 (COVID-19) and help stop the spread of rumors.

FACT 1 Diseases can make anyone sick regardless of their race or ethnicity.

People of Asian descent, including Chinese Americans, are not more likely to get COVID-19 than any other American. Help stop fear by letting people know that being of Asian descent does not increase the chance of getting or spreading COVID-19.

FACT 2 Some people are at increased risk of getting COVID-19.

People who have been in close contact with a person known to have COVID-19 or people who live in or have recently been in an area with ongoing spread are at an increased risk of exposure.

FACT 3 Someone who has completed quarantine or has been released from isolation does not pose a risk of infection to other people.

For up-to-date information, visit CDC's coronavirus disease 2019 web page.

FACT 4 You can help stop COVID-19 by knowing the signs and symptoms:

- Fever
- Cough
- Shortness of breath

Seek medical advice if you

- Develop symptoms

AND

- Have been in close contact with a person known to have COVID-19 or if you live in or have recently been in an area with ongoing spread of COVID-19.

FACT 5 There are simple things you can do to help keep yourself and others healthy.

- Wash your hands often with soap and water for at least 20 seconds, especially after blowing your nose, coughing, or sneezing; going to the bathroom; and before eating or preparing food.
- Avoid touching your eyes, nose, and mouth with unwashed hands.
- Stay home when you are sick.
- Cover your cough or sneeze with a tissue, then throw the tissue in the trash.

For more information: www.cdc.gov/COVID19



- 1 Welcome
- 2 Project Overview
- 3 Environmental Overview
- 4 Proposed Right of Way and Displacements
- 5 Proposed Schedule
- 6 Public Comment Process
- 7 Adjournment



National Environmental Policy Act (NEPA) Assignment to the Texas Department of Transportation

The environmental review, consultation, and other actions required by applicable Federal environmental laws for this project are being, or have been, carried out by TxDOT pursuant to 23 U.S.C. 327 and a Memorandum of Understanding dated Dec. 9, 2019, and executed by the Federal Highway Administration (FHWA) and TxDOT.



1. Inform the public of project status and project recommendations
2. Describe the project so the public can determine how they may be affected
3. Provide the public the opportunity to provide input
4. Develop a record of public participation

How to Provide Feedback



All feedback must be provided by Wednesday, May 26, 2021 to be included in the official record.



EMAIL

CapExSouth@txdot.gov



MAIL

Matthew Cho, P.E.
1608 W. 6th Street
Austin, TX 78703



ONLINE

My35CapEx.com

- Fill out an online form
- Download a comment form and send by email or mail



VERBAL COMMENT BY VOICEMAIL

(512) 501-5451

For general questions about the presentation or the project, please contact Matthew Cho, P.E. at Matthew.Cho@TxDOT.gov or (512) 865-7945. The public may email at any time in the project development process to ask questions about the project.



- Website:
 - My35CapEx.com

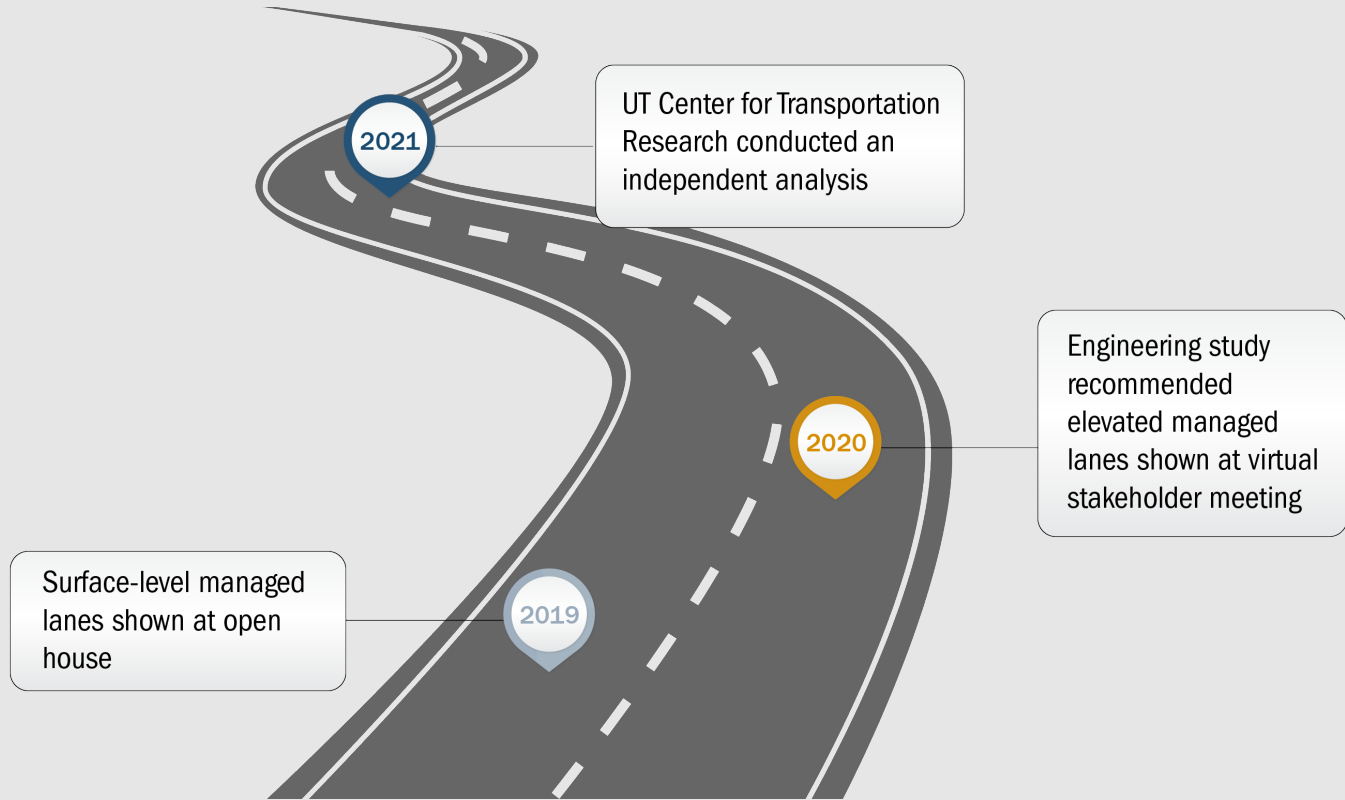
- The information presented on this website is the same information being presented in this video.

I-35 Capital Express South Project - Location, Need and Purpose



- **Project Limits**
 - I-35 from SH 71/Ben White Boulevard to SH 45 Southeast
- **What are the problems being addressed? (Project Need)**
 - Safety
 - Congestion
 - Mobility
- **What are we trying to do? (Project Purpose)**
 - Increase safety and mobility on I-35 for the traveling public

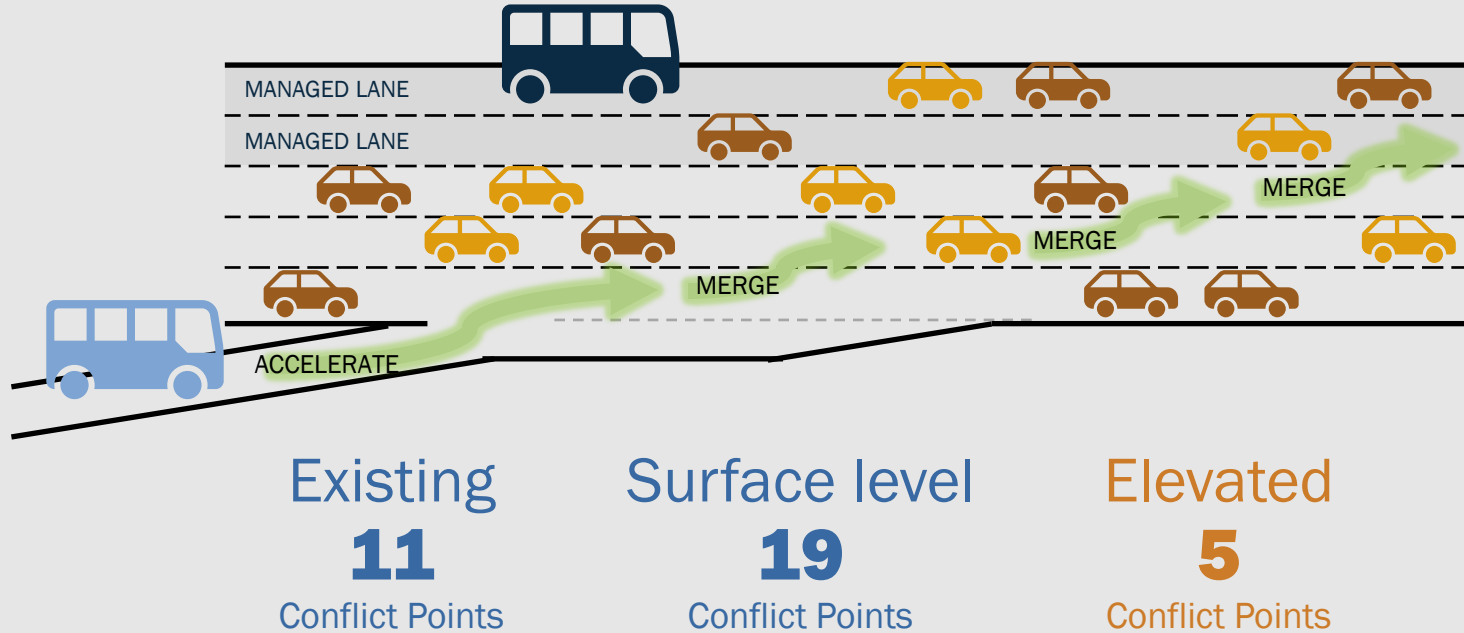




Elevated vs. Existing and Surface-level Conflict Points



Conflict points are where vehicles' paths merge, diverge or cross.

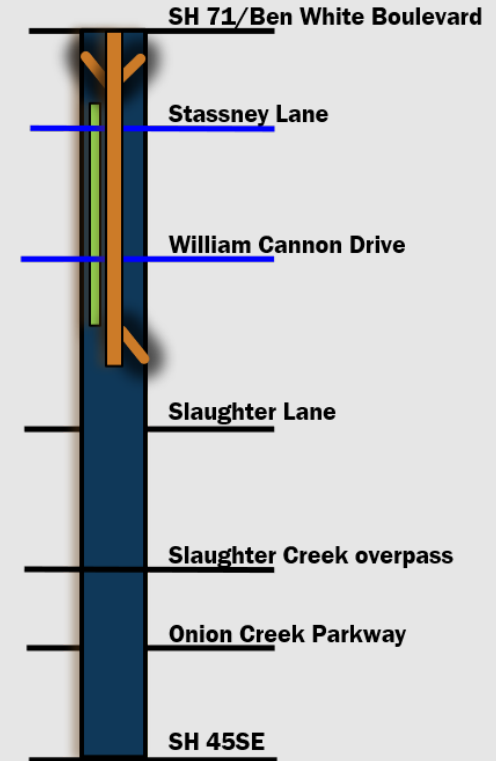


I-35 Capital Express South Project – Proposed Build Alternative

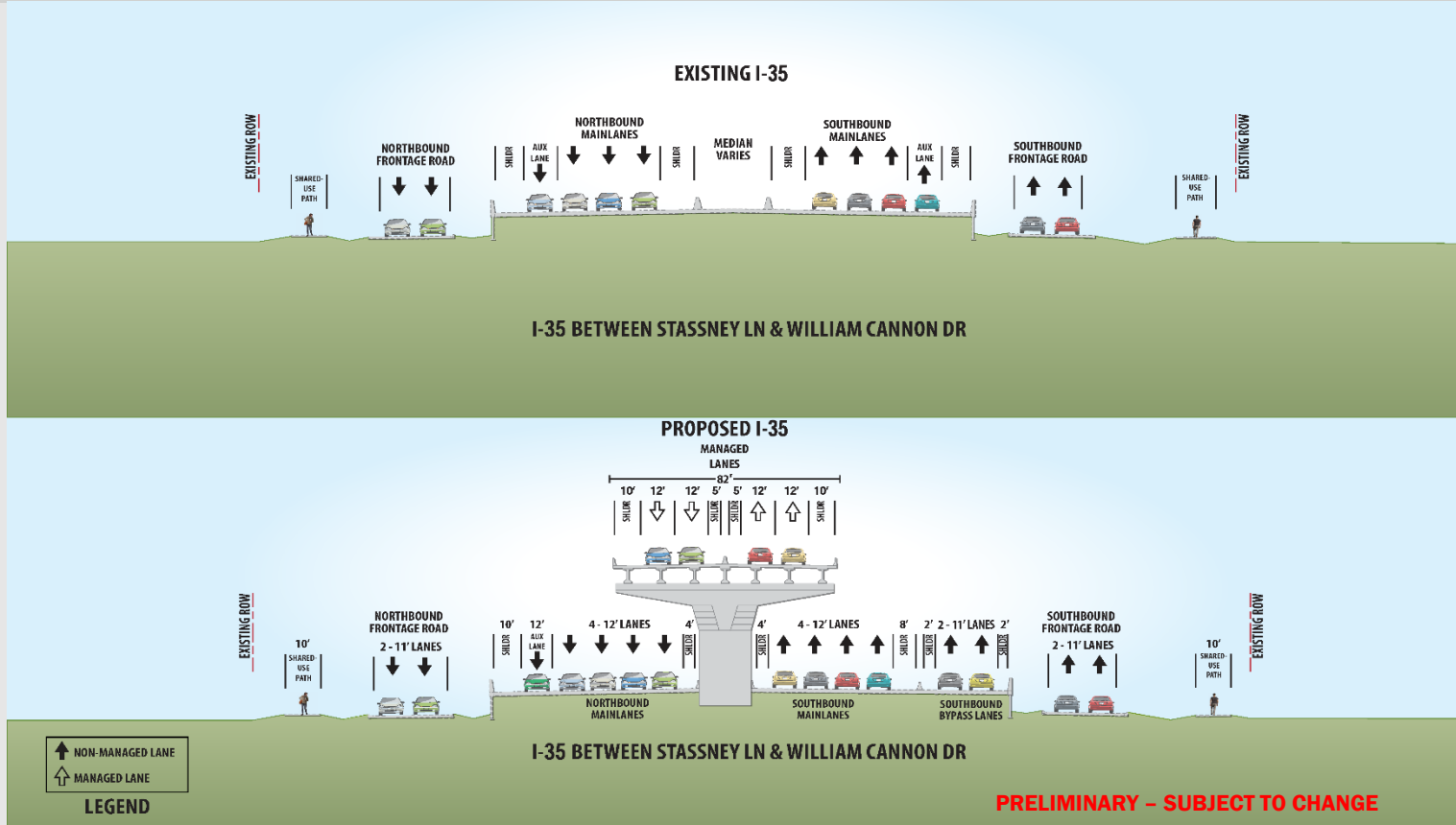


▪ Mobility and safety improvements include:

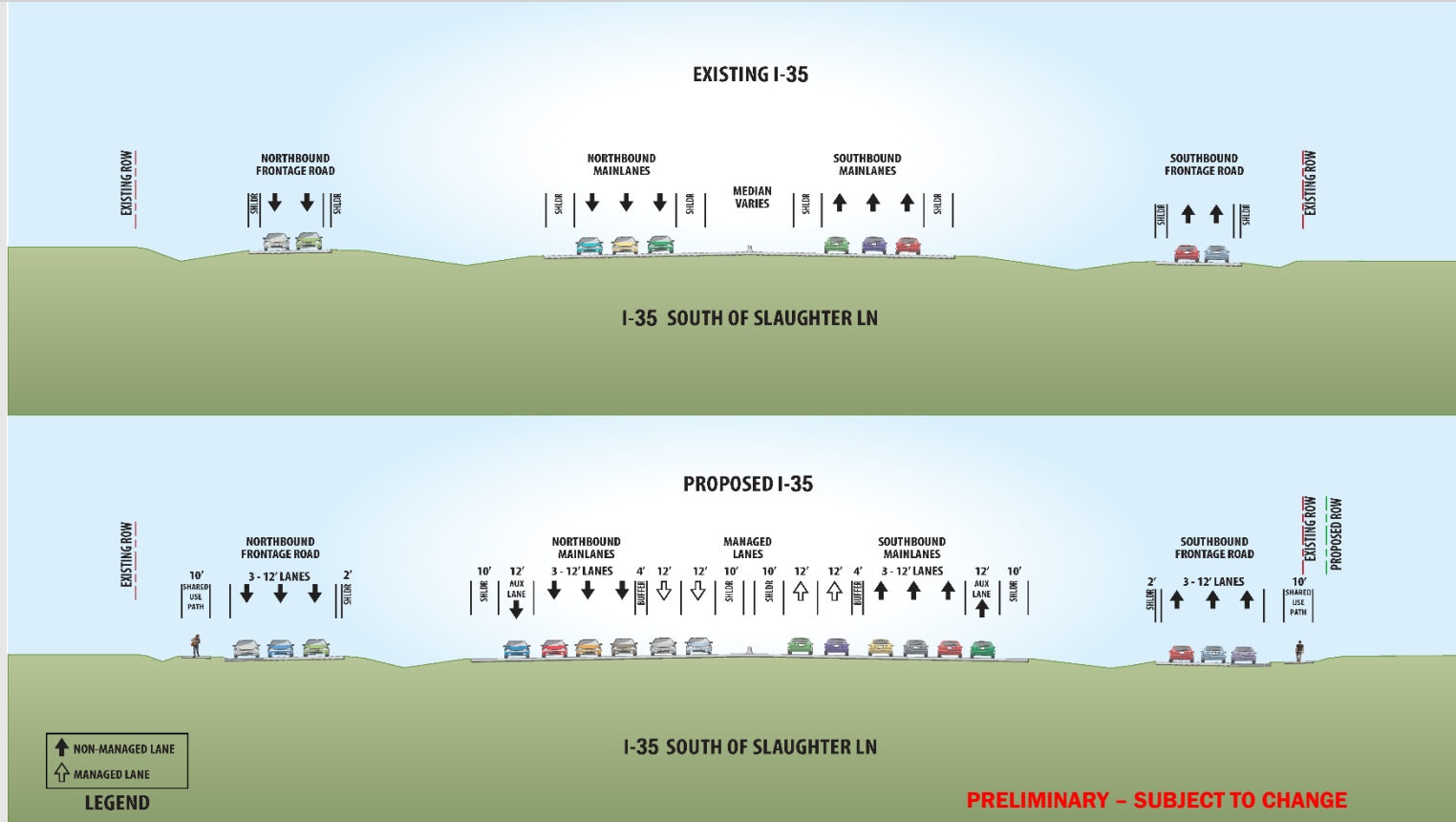
- Adding two non-tolled managed high-occupancy vehicle lanes in each direction
 - 7.6 miles from SH 71/Ben White Blvd. to SH 45SE
 - Improves transit operations and mobility
- Improving/adding bicycle and pedestrian paths
 - Approximately 13 miles of new shared-use paths in addition to 3 miles of recently constructed shared-use paths
- Reconstructing bridges
- Addressing safety and mobility
 - Adds 1.7 miles of intersection bypass lanes for safer and faster access to/from the mainlanes and to benefit local and regional mobility
 - Eliminates 5 direct mainlane merges
 - Improves east/west connections over or under I-35



Typical Sections - I-35 between Stassney Lane and William Cannon Drive



Typical Sections – I-35 South of Slaughter Lane





Utility Adjustments



- Utility adjustments and relocations throughout the corridor are required prior to construction
- Utility adjustments will occur prior to roadway construction
- The adjustments and relocation of any utilities would be managed so that no substantial interruptions occur



- The Draft Environmental Assessment was prepared for this project to comply with the National Environmental Policy Act (NEPA). The environmental study identified and assessed potential impacts to the natural and human environment, including:



AIR QUALITY



COMMUNITY IMPACTS



**HAZARDOUS
MATERIAL SITES**



**HISTORICAL & ARCHEOLOGICAL
RESOURCES**



**INDIRECT & CUMULATIVE
IMPACTS**



**LAND USE &
PARKLAND**



**THREATENED &
ENDANGERED SPECIES**



TRAFFIC NOISE



**VEGETATION &
WILDLIFE**



WATER RESOURCES

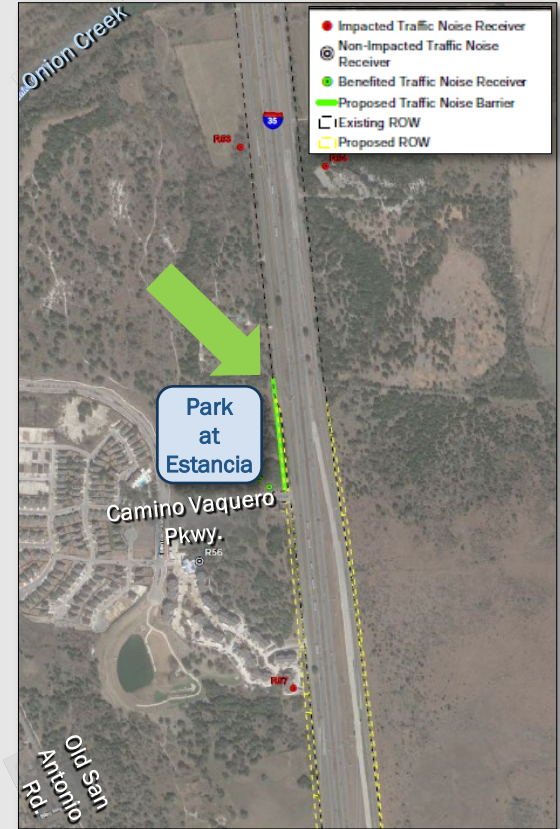
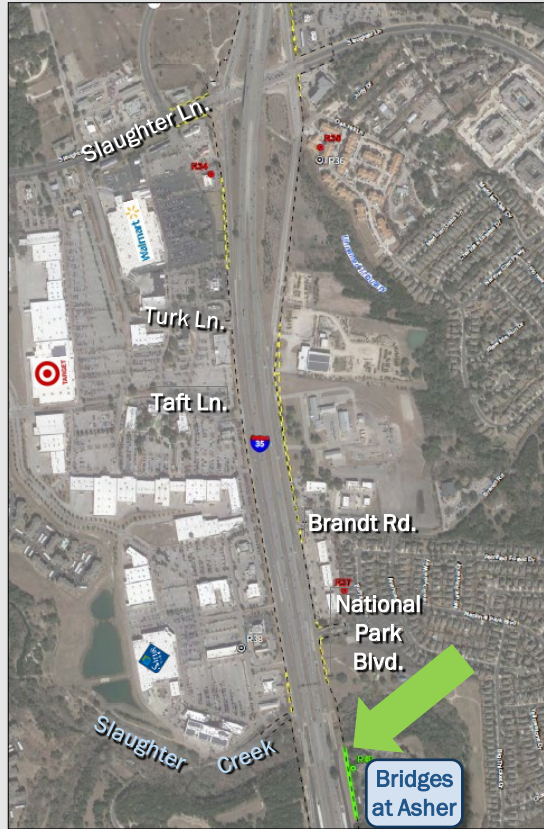


- According to the Community Impacts Assessment, the proposed project is not anticipated to result in negative impacts to access, travel patterns or community cohesion
 - The proposed project would reduce travel times, increase safety and improve bike/ped facilities
 - The proposed project would not affect, separate, or isolate any distinct neighborhoods, ethnic groups or other specific groups
- The requirements of Executive Order (EO) 12898, Federal Actions to Address Environmental Justice in Minority Populations and Low-Income Populations, are satisfied
 - No disproportionately high and adverse impacts to minority or low-income populations are anticipated



- A traffic noise analysis was conducted
- The proposed project would result in traffic noise impacts to 30 representative receivers
- Noise barriers were feasible and reasonable at three locations and, therefore, are being proposed for incorporation in the project:
 - Bridges at Asher Apartments (2 representative receivers)
 - Park at Estancia Apartments
- A noise workshop will be held prior to construction

Environmental Overview – Proposed Traffic Noise Barriers





- Four potential Waters of the U.S. (WOUS) were identified within the project area and one wetland:
 - Williamson Creek, Boggy Creek, Slaughter Creek, and Onion Creek
 - One non-WOUS unnamed wetland
- Impacts to WOUS would be authorized through a U.S. Army Corps of Engineers Nationwide Permit 14 without a Preconstruction Notification (PCN)
- During construction, impacts to WOUS would be minimized to the extent practical



Downstream view of Onion Creek



Ephemeral tributary to Williamson Creek



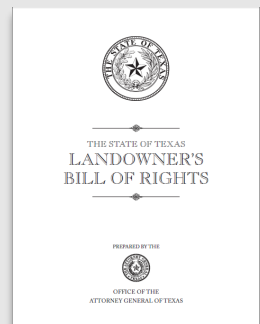
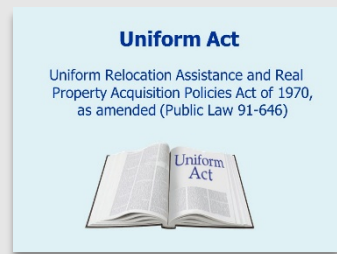
Based on the findings in the draft EA and technical reports, implementation of the proposed project would not result in a significant impact on the human or natural environment under NEPA. Therefore, a finding of no significant impact is recommended.

Proposed Right of Way and Displacements

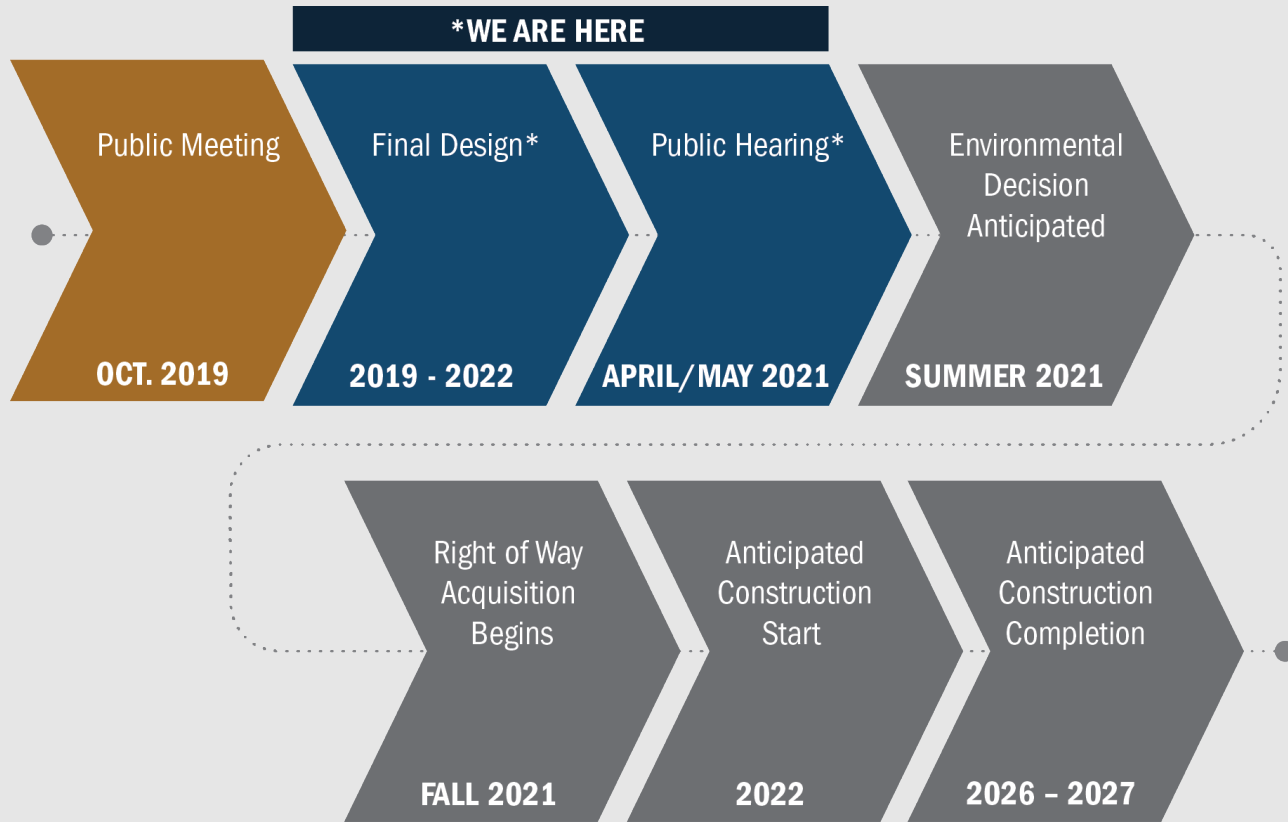


- **Proposed Right of Way (ROW)**
 - Approximately 13 acres of new ROW
- **Displacements**
 - There are no residential or commercial property displacements

42 USC Ch. 61—UNIFORM RELOCATION ASSISTANCE AND REAL PROPERTY ACQUISITION POLICIES FOR FEDERAL AND FEDERALLY ASSISTED PROGRAMS	
From Title 42—THE PUBLIC HEALTH AND WELFARE	
CHAPTER 61—UNIFORM RELOCATION ASSISTANCE AND REAL PROPERTY ACQUISITION POLICIES FOR FEDERAL AND FEDERALLY ASSISTED PROGRAMS	
SUBCHAPTER I—GENERAL PROVISIONS	
Sec.	Definitions.
4801.	Effect upon property acquisition.
4802.	Additional appropriations for moving costs, relocation benefits and other expenses incurred in acquisition of lands for National Park System; waiver of benefits.
4803.	Certification.
4804.	Displaced persons not eligible for assistance.
4805.	
SUBCHAPTER II—UNIFORM RELOCATION ASSISTANCE	
4821.	Declaration of findings and policy.
4822.	Moving and related expenses.



Please visit www.txdot.gov for more information about the Uniform Act and TxDOT Relocation Assistance Program information



Estimated Construction Cost
Approximately \$300 million

How to Provide Feedback



All feedback must be provided by Wednesday, May 26, 2021 to be included in the official record.



EMAIL

CapExSouth@txdot.gov



MAIL

Matthew Cho, P.E.
1608 W. 6th Street
Austin, TX 78703



ONLINE

My35CapEx.com

- Fill out an online form
- Download a comment form and send by email or mail



VERBAL COMMENT BY VOICEMAIL

(512) 501-5451

For general questions about the presentation or the project, please contact Matthew Cho, P.E. at Matthew.Cho@TxDOT.gov or (512) 865-7945. The public may email at any time in the project development process to ask questions about the project.



Thank you for participating!

