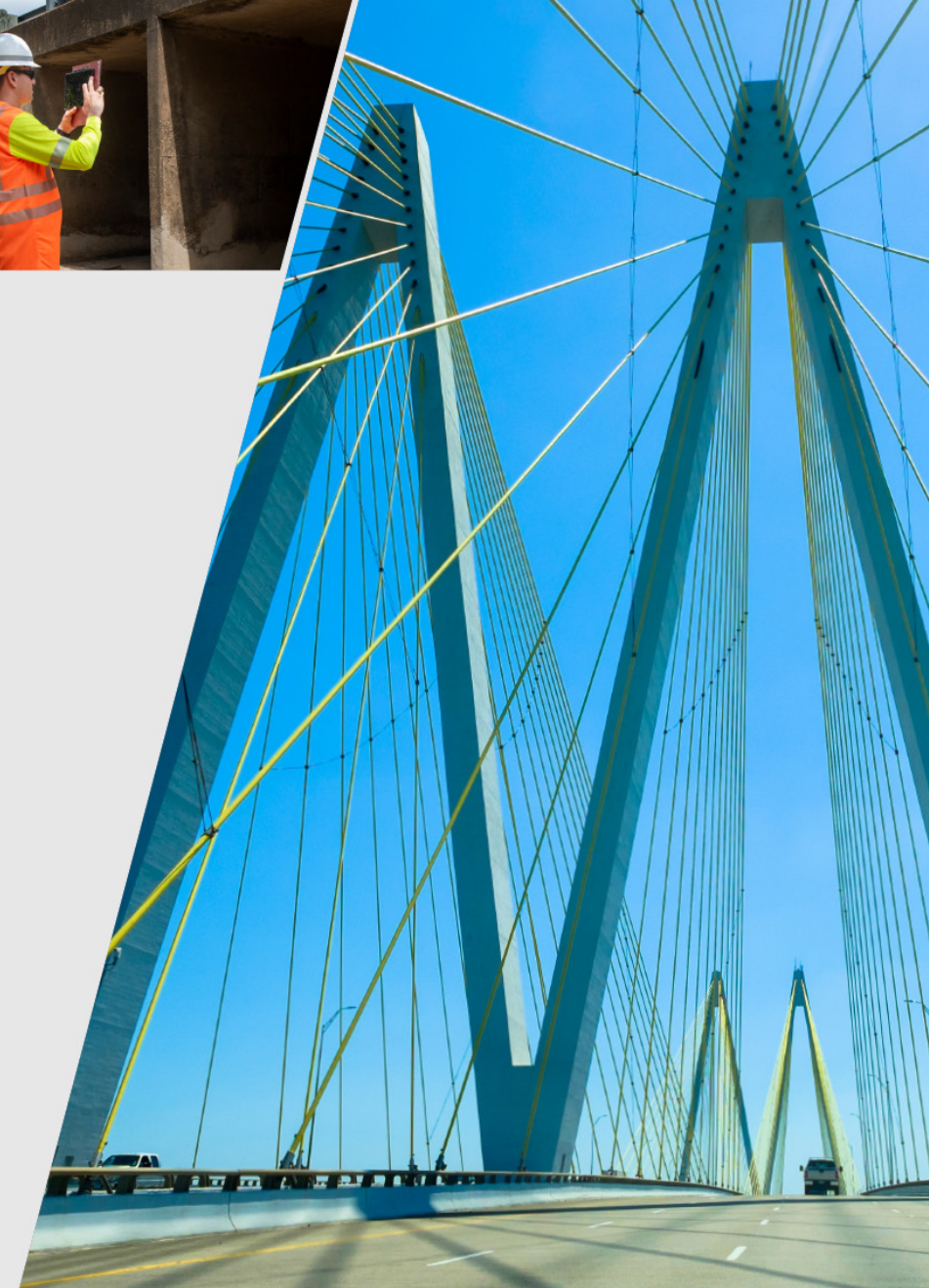




I-35 Capital Express Central VOICE Meeting



Go to www.menti.com and use the code 9067 5527



Scan the QR code or
follow the instructions
at the top of this slide
to access the survey





Live35

Locally Influenced Visual Enhancements

Tonight's Meeting



Housekeeping



We ask that all participants keep mics muted during the presentation.



TxDOT wants to hear from you! Visit my35capex.com to share your feedback or ask questions anytime.



Capital Express Central Project Update

**SAVE
THE
DATE**



Date:

January 25, 2022

Time:

6:00 pm

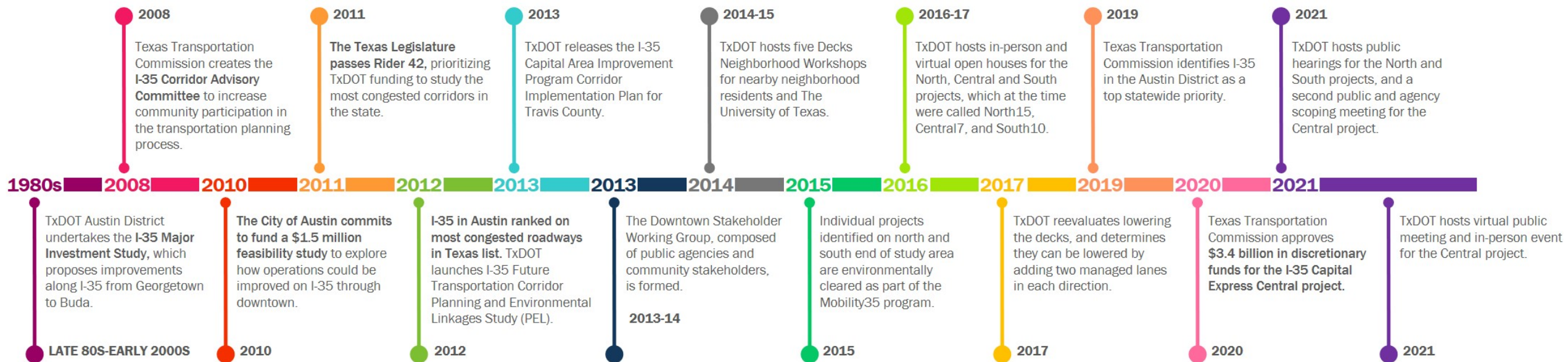
Location:

Central Public Library

I-35 Capital Express Program History



The current proposed alternatives are the result of decades of feedback received from the public.



I-35 Capital Express Central Project Scope



- **Limits:** US 290 East to SH 71/Ben White Boulevard, with additional flyovers at I-35 and US 290 East.
- **Length:** 8 miles.
- **Project details:**
 - Construct two non-tolled managed lanes in each direction.
 - Managed lanes, such as high-occupancy vehicle (HOV) lanes, are a set of lanes within a highway that are separated from the mainlanes. Access is controlled by placing restrictions on use.
 - Reconstruct ramps, bridges and intersections.
 - Improve frontage roads.
 - Enhance bicycle and pedestrian paths.
 - Accommodate transit routes.

Estimated construction cost: \$4.9 billion

Anticipated construction start: 2025



Where We Are in the Process



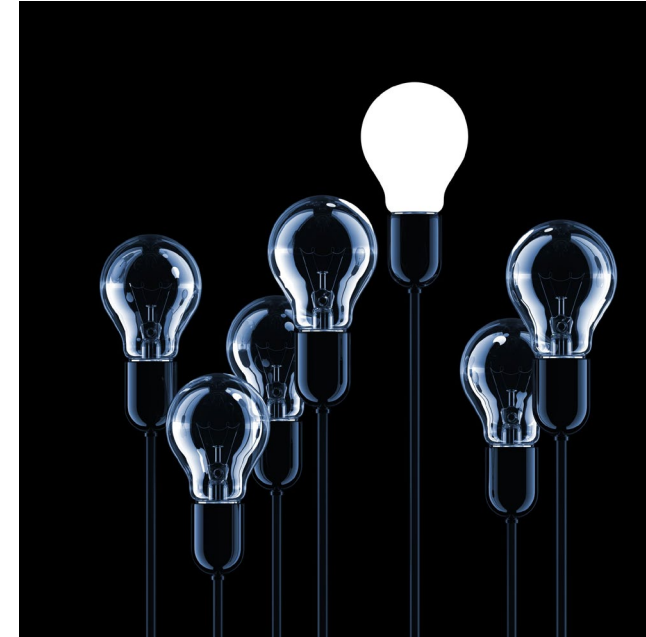
TxDOT encourages feedback throughout the duration of the project. In addition to the official comment periods listed above, feedback may also be submitted via workshops, neighborhood meetings and stakeholder outreach. These events will take place throughout the process, and public comments submitted will be documented and incorporated as the project is developed.



What is Live35?

-
- **Expectations of the process**
 - History of the Aesthetics Program
 - Aesthetics Program Partnership - TxDOT and City of Austin
 - **Quality Feedback**
 - Austin's Cultural Landscape
 - Design elements
 - **Next Steps**

-
- Aesthetics Working Group
 - Rankings by Community
 - Lighting for Safety - #1



-
- I-35 Aesthetic Guidelines
 - Community Facing Features
 - Setting Expectations

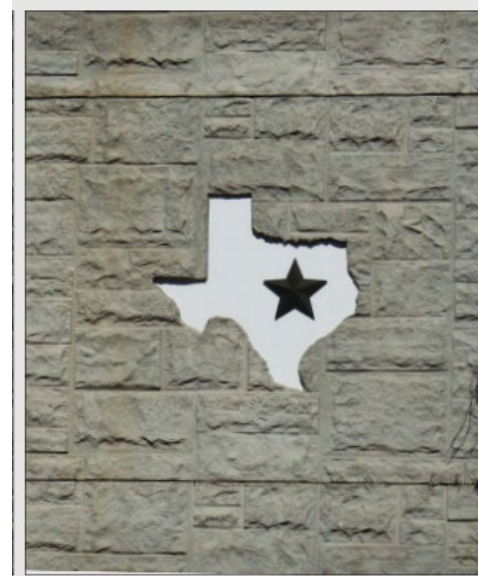


Fig 3.9- Ashlar Texture, Signature MSE Panel



Fig. 3.3- Inverted "T" Bent, with "Longhorn" Column and Five Star Bent Cap

TxDOT & City of Austin are working in partnership on a strategy for implementation and maintenance of aesthetics improvements. This includes:

- Funding the aesthetic elements on the east-west crossings and Lady Bird Lake.
- Implementing the infrastructure for the community facing features.
- Ensuring compatibility with possible improvements on Cap and Stitch components.
- Maintaining the aesthetic elements along I-35 once constructed.

Go to www.menti.com and use the code 9067 5527



Scan the QR code or
follow the instructions
at the top of this slide
to access the survey



A 3D-rendered red flag with a silver pin is stuck into a stylized map. The map features a grid of streets, green areas representing parks or fields, and a blue line representing a river or canal. The flag is positioned in the upper left quadrant of the image.

WHERE DO YOU LIVE?



Austin's Cultural Landscape

Go to www.menti.com and use the code 9067 5527



Scan the QR code or
follow the instructions
at the top of this slide
to access the survey





THANK YOU

Thanks for your time and feedback tonight.

Visit www.my35capex.com/aesthetics for more information and to keep updated on this aesthetics plan.