

Live35

To celebrate Austin's cultural and community diversity, TxDOT launched Live35, an aesthetic design program for the I-35 Capital Express Central project.

Live35 is connecting communities and cultures through **Locally Influenced Visual Enhancements**.

Purpose of Aesthetic Design Program for I-35 Capital Express Central Project

- To identify community-facing aesthetic concepts and solutions through treatments to structural roadside components along the I-35 corridor.
- To provide TxDOT with cohesive, consistent corridor-wide guidance that promotes opportunities to proactively design schematics using an organized and well managed process, while defining the opportunities for adjoining communities to promote their identity.

Goals

- Learn about the cultural and historical elements of each district or neighborhood area.
- Get feedback on preferred aesthetic treatment of design elements/features.
- Obtain understanding of preferred locations for design elements
- Gain a clear understanding of common language regarding aesthetic treatments to the corridor.

Project Limits Capital Express Central



Streetscape Baseline Scenarios

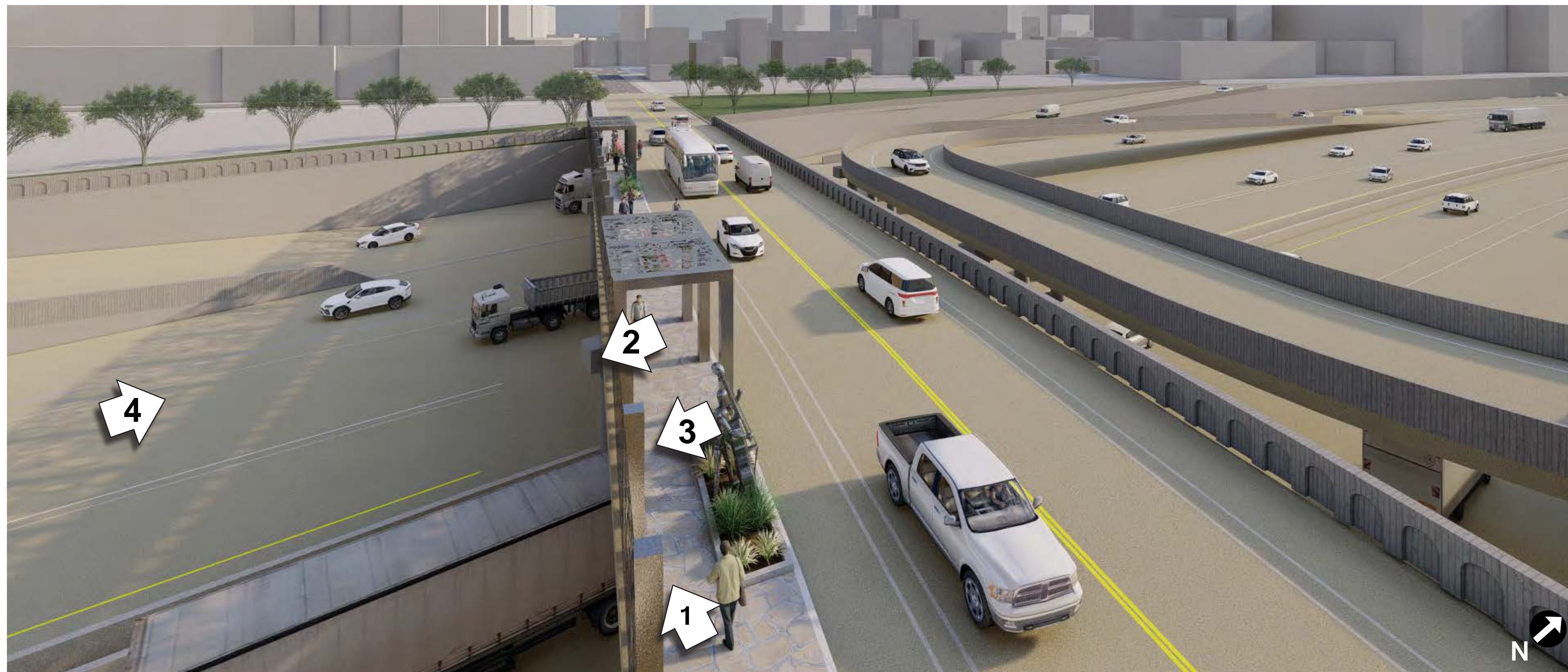
BASELINE 1



BASELINE 2



Holly Street



NOTES AND STICKIES HERE



4 BRIDGE BARRIER ENHANCEMENT

BASELINE 1



1 PEDESTRIAN & BIKE PATH



2 INTEGRATED SHADE STRUCTURE



3 VISUAL & ART ENHANCEMENT

Cesar Chavez Street



BASELINE 1



BASELINE 2



5 SHARED USE PATH ENHANCEMENT



4 CONNECTION TO DECK PLAZA



1 ART & AESTHETIC ENHANCEMENT



2 LANDSCAPE & ART ENHANCEMENT



3 SHADE STRUCTURE OVER SHARED-USE PATH

Cesar Chavez Street



BASELINE 1



BASELINE 2



5 ART & LANDSCAPE ENHANCEMENT



4 CONNECTION TO DECK PLAZA



1 ART & AESTHETIC ENHANCEMENT



2 ART & LANDSCAPE ENHANCEMENT



3 INTEGRATED SHADE STRUCTURE

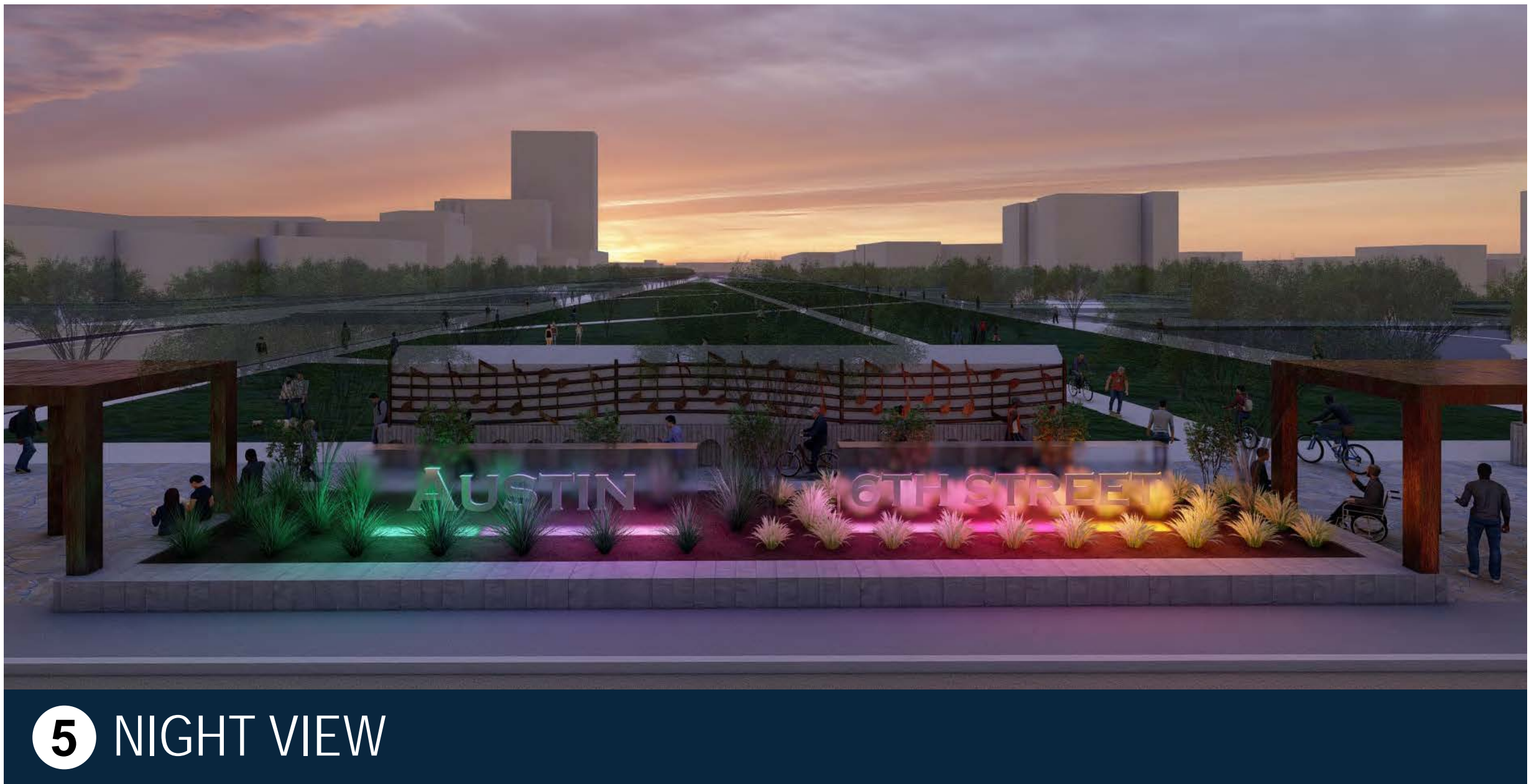
6th Street



BASELINE 1



BASELINE 2



6th Street



BASELINE 1



BASELINE 2



5 SHARED-USE PATH & RAIL ENHANCEMENT



4 CONNECTION TO DECK PLAZA



1 ART ENHANCEMENTS

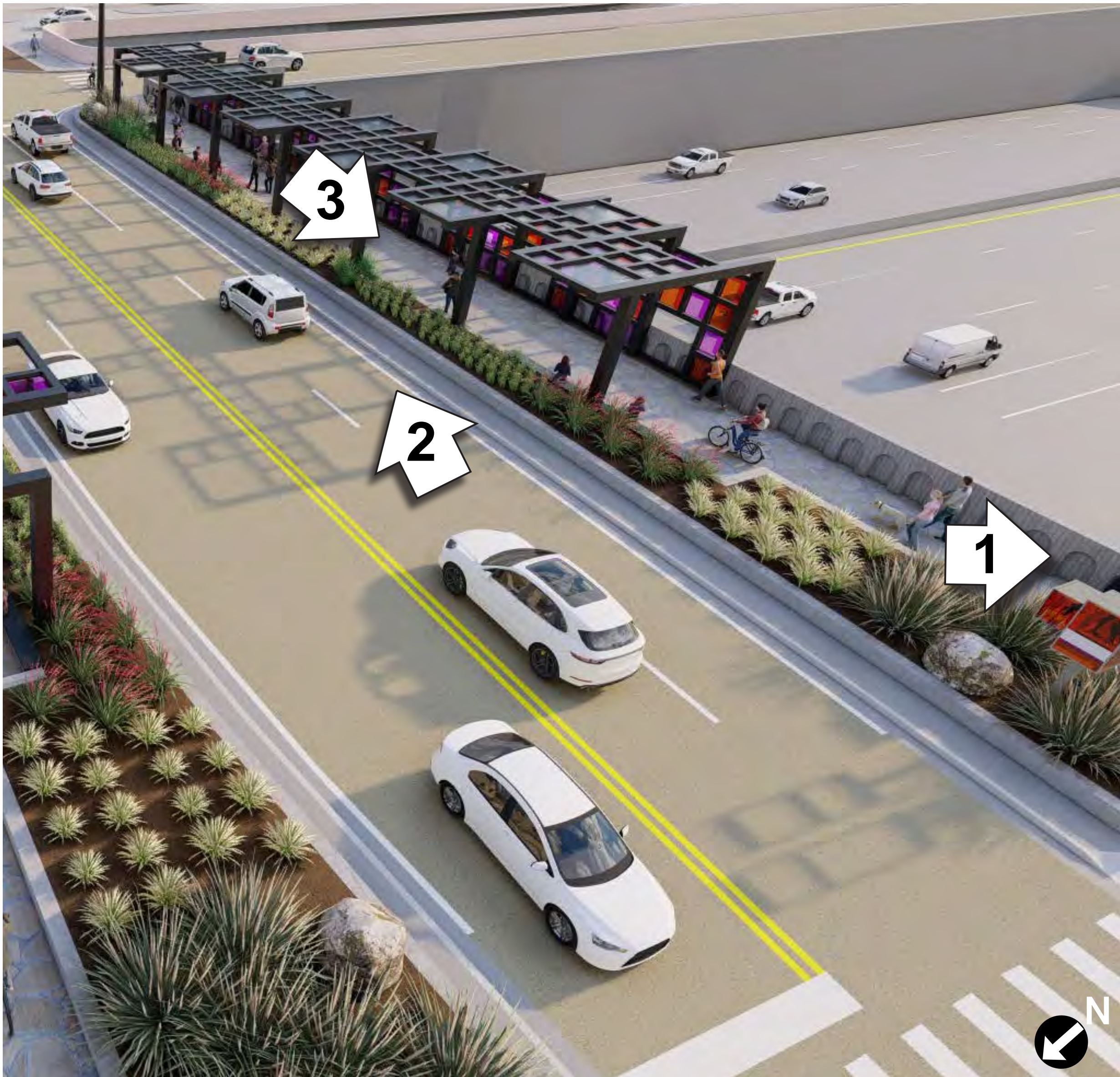


2 ART & LANDSCAPE ENHANCEMENT



3 SHADE STRUCTURE

11th Street



BASELINE 1



BASELINE 2



5 PEDESTRIAN PATH AESTHETIC



4 CONNECTION TO DECK PLAZA



1 ART & AESTHETIC ENHANCEMENT



2 LANDSCAPING



3 INTEGRATED SHADE STRUCTURE

11th Street



BASELINE 1



BASELINE 2



5 PEDESTRIAN PATH & AESTHETIC



4 CONNECTION TO DECK PLAZA



1 ART & AESTHETIC ENHANCEMENT



2 LANDSCAPE ENHANCEMENT

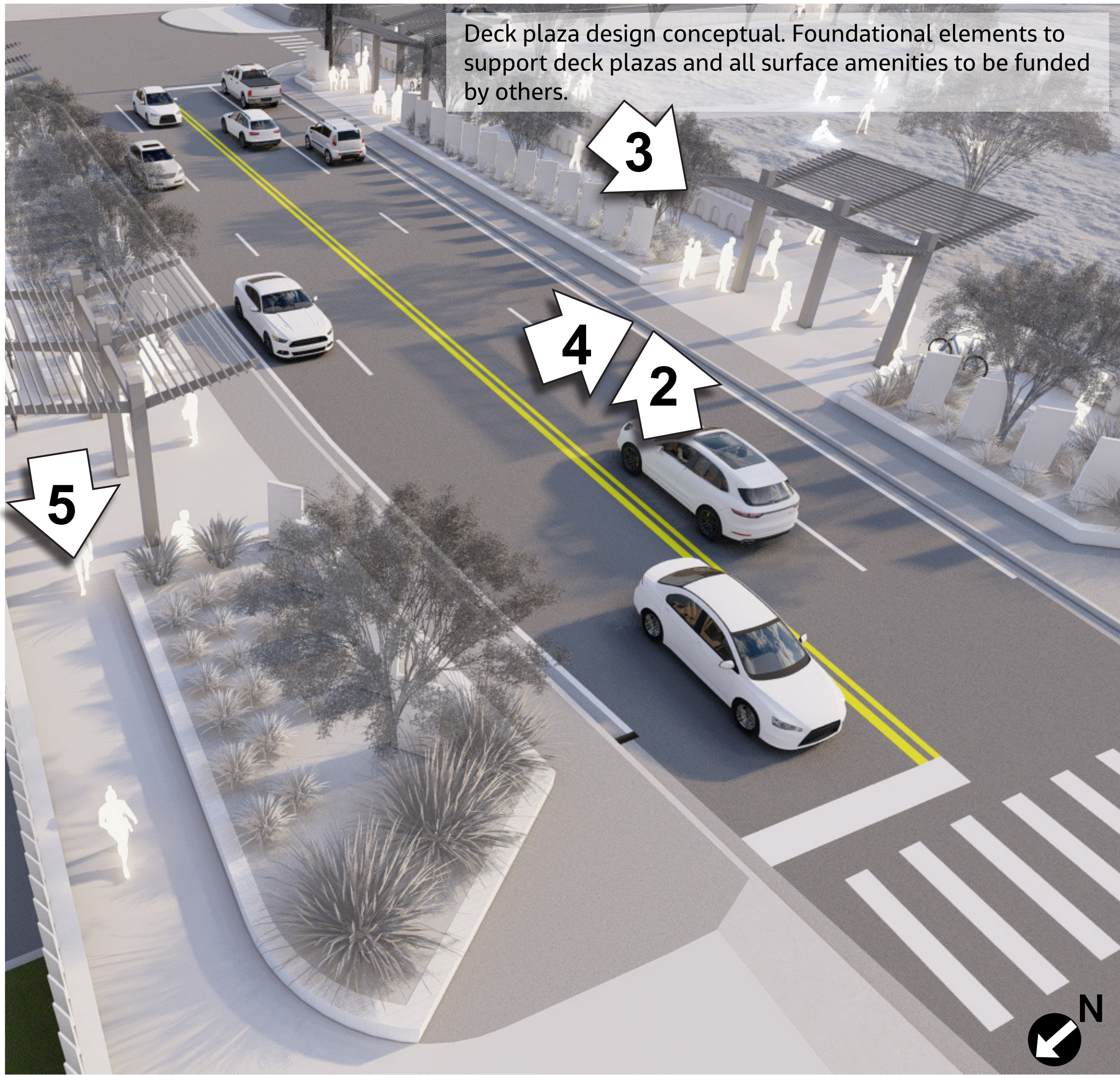


3 SHADE STRUCTURE OVER SUP

11th Street



BASELINE 1



BASELINE 2



5 PEDESTRIAN PATH AESTHETIC



4 CONNECTION TO CAP PARK



1 ART & AESTHETIC ENHANCEMENT



2 LANDSCAPE ENHANCEMENT



3 SHADE STRUCTURE

Martin Luther King Jr. Boulevard



BASELINE 1



BASELINE 2



5 SHADE STRUCTURE



4 CONNECTION TO DECK PLAZA



1 BRIDGE CROSSING RAIL ENHANCEMENT



2 LANDSCAPE ENHANCEMENT



3 LANDSCAPE ENHANCEMENT

Martin Luther King Jr. Boulevard



BASELINE 1



BASELINE 2



5 BRIDGE CROSSING RAIL ENHANCEMENT



4 CONNECTION TO DECK PLAZA



1 ART & LANDSCAPE ENHANCEMENT



2 LANDSCAPE ENHANCEMENT



3 SHADE STRUCTURE

Dean Keeton Street



BASELINE 1

NOTES AND STICKIES HERE



4 OUTDOOR SEATING & SHADE STRUCTURE



1 CORNER TREATMENT



2 SHADE STRUCTURE



3 ART & LANDSCAPE ENHANCEMENT

Dean Keeton Street



BASELINE 1

NOTES AND STICKIES HERE



4 PEDESTRIAN CROSSING VIEW TOWARDS WEST



1 WATER FEATURE



2 SHADE STRUCTURE & OUTDOOR SEATING



3 LANDSCAPE & SEATING SPACE ENHANCEMENT

32nd Street



BASELINE 1

NOTES AND STICKIES HERE



4 WEST VIEW BRIDGE CROSSING



1 SOUTHWEST VIEW AT NORTHBOUND FRONTAGE ROAD



2 SHARED-USE PATH & SHADE STRUCTURE



3 SHARED-USE PATH & LANDSCAPE

32nd Street



BASELINE 2

NOTES AND STICKIES HERE



4 WEST VIEW BRIDGE CROSSING



1 SOUTHWEST VIEW AT NORTHBOUND FRONTAGE ROAD



2 SHARED-USE PATH & SHADE STRUCTURE



3 SHARED-USE PATH LANDSCAPE

Cherrywood East Frontage



BASELINE 1

NOTES AND STICKIES HERE



4 PARK ENTRANCE AT NIGHT



1 SHARED-USE PATH



2 SHADE STRUCTURE



3 PARK LANDSCAPE

Cherrywood East Frontage



BASELINE 2

NOTES AND STICKIES HERE



4 PARK ENTRANCE AT NIGHT



1 SHARED-USE PATH



2 SHADE STRUCTURE



3 PARK LANDSCAPE

41st Street



BASELINE 1



BASELINE 2



1 ART ENHANCEMENTS



2 LANDSCAPING



3 RAIL ENHANCEMENT & SHARED-USE PATH

41st Street



BASELINE 1



BASELINE 2



5 SHARED-USE PATH & RAIL ENHANCEMENT



4 CONNECTION TO DECK PLAZA



1 ART ENHANCEMENTS



2 LANDSCAPING



3 SHADE STRUCTURE

Airport Boulevard



BASELINE 1

NOTES AND STICKIES HERE



4 SHADE STRUCTURE & RAILING



1 PEDESTRIAN & BIKE PATH



2 VIEW OF PEDESTRIAN TUNNEL

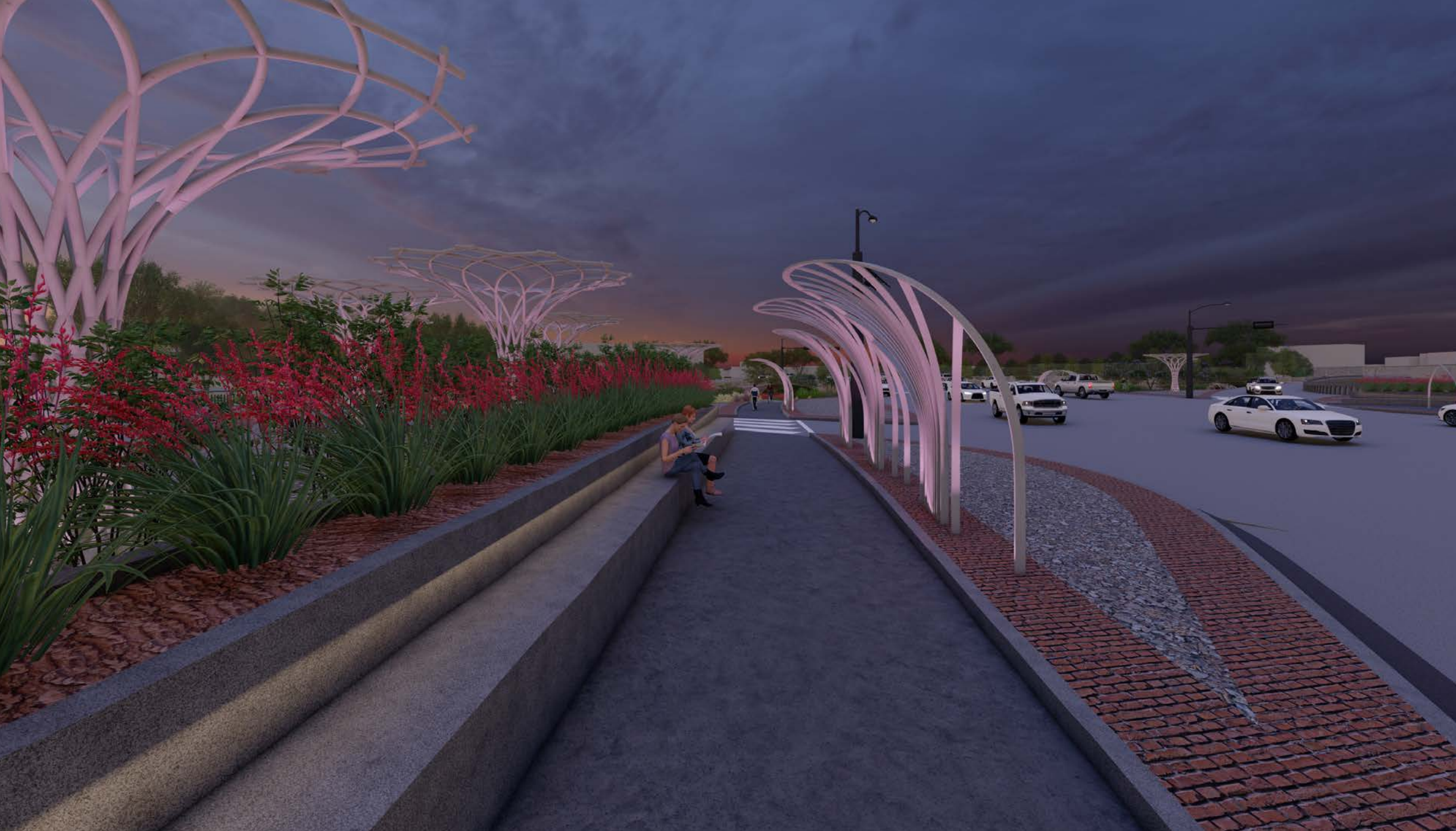
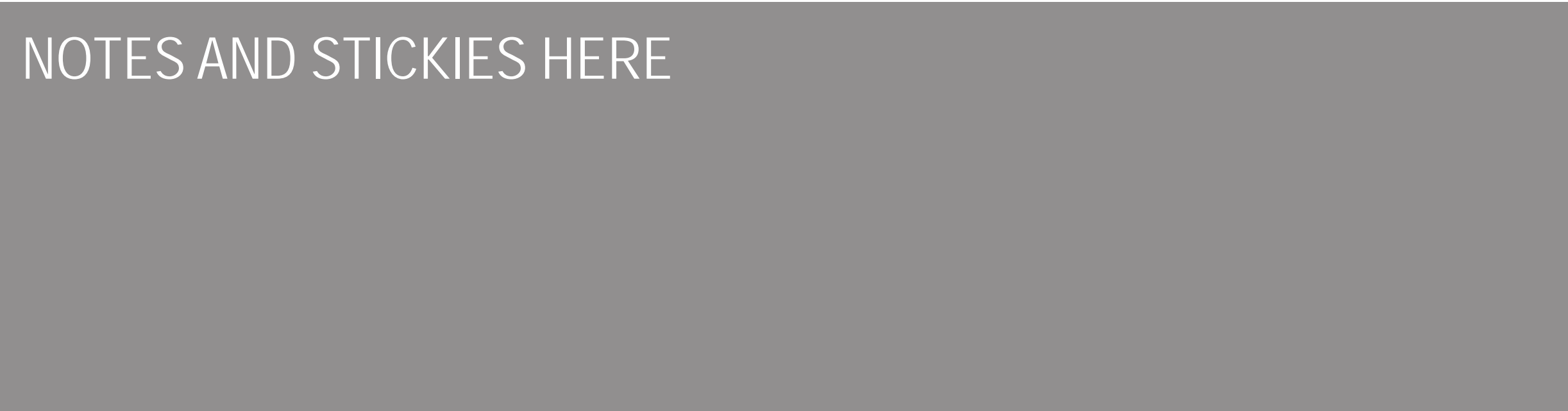


3 PEDESTRIAN & BIKE PATH

Airport Boulevard



BASELINE 1



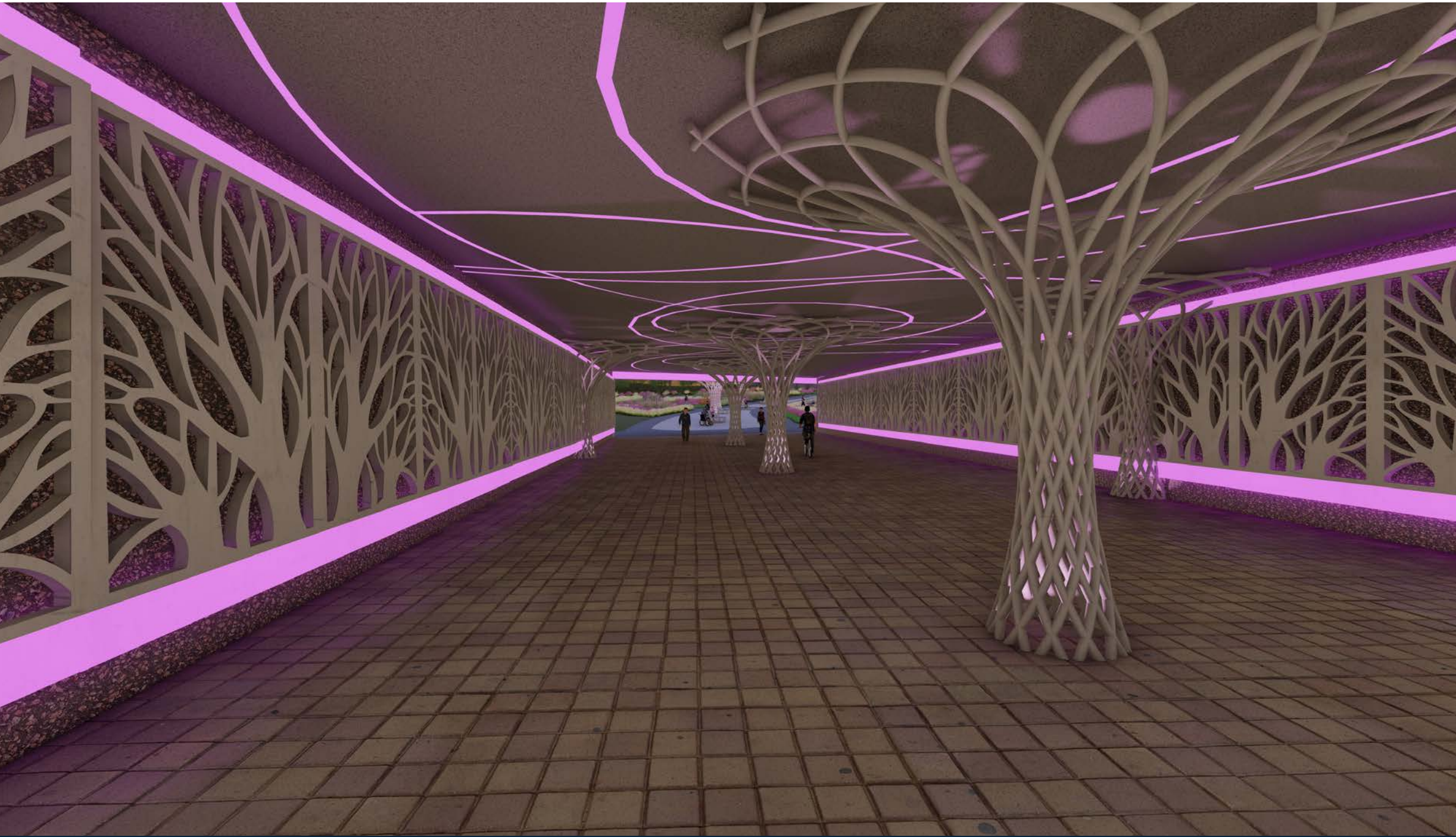
4 SHADE STRUCTURE & RAILING



1 PEDESTRIAN & BIKE PATH



2 VIEW OF PEDESTRIAN TUNNEL



3 INTERIOR VIEW OF PEDESTRIAN TUNNEL